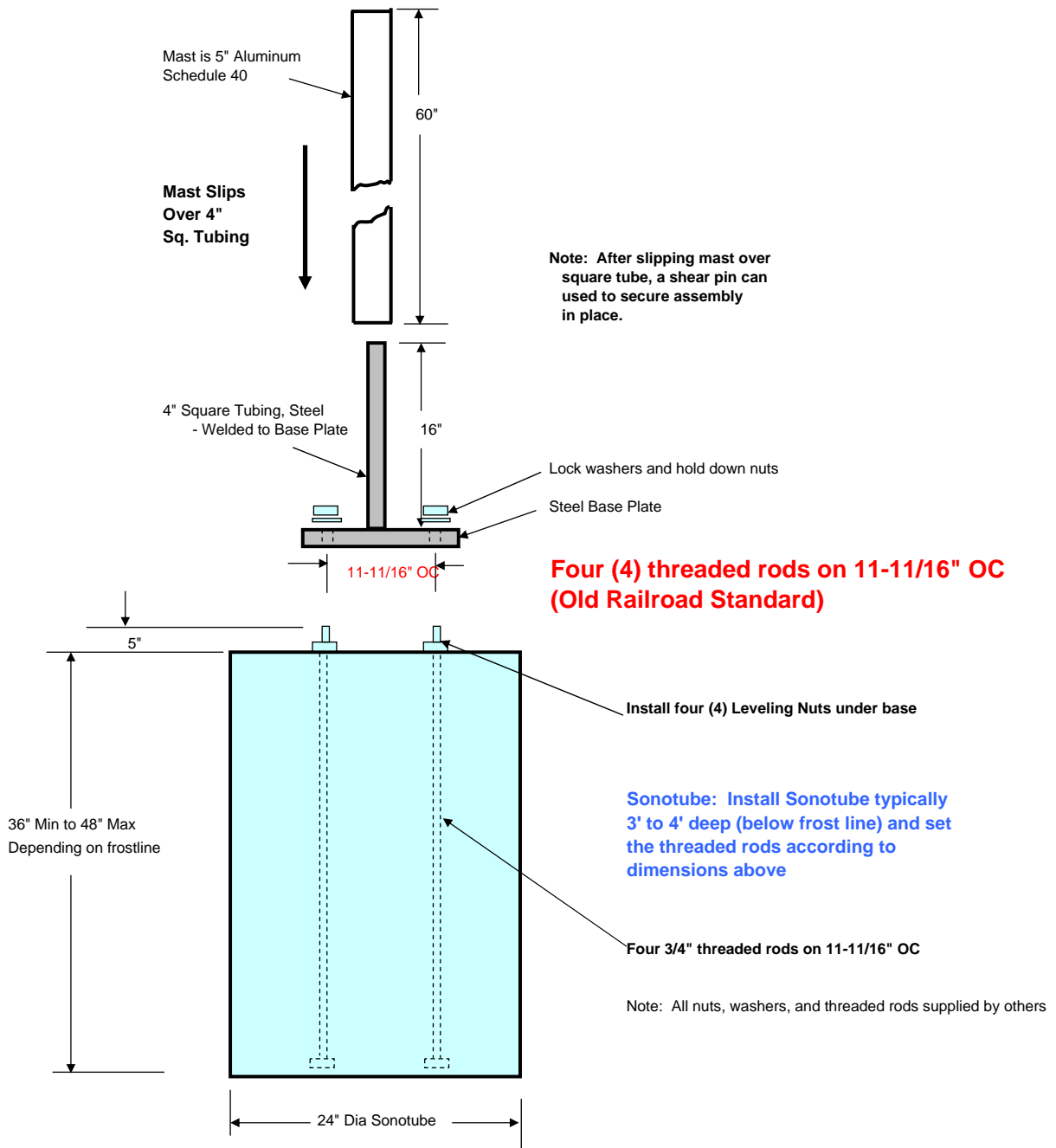


Barrier Gate Base, Mast, & Foundation



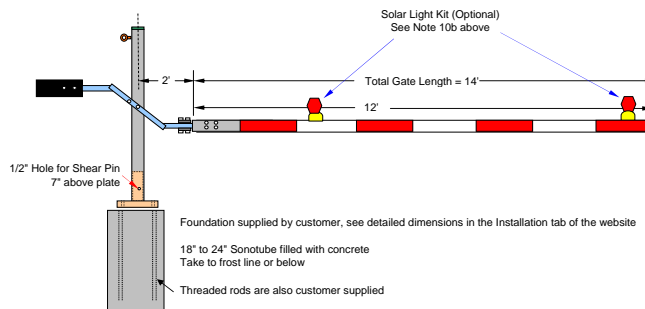
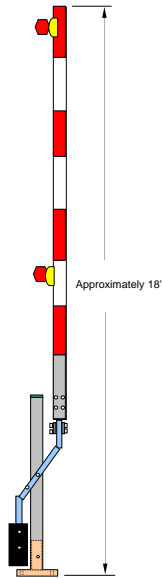
Note 1: The Sonotube, threaded rod, and hold down washers/nuts are supplied by customer

Note 2: Raise Sonotube approx. 4" off bottom of hole so as to let the concrete flow out of the bottom of the Sonotube creating a cantilever to increase stability.

Safe-Crossings 14' Barrier Gate General Notes:

See installation manual for detailed instructions

- 1 All barrier gate arms shall be grade 6061 - T6 Aluminum
- 2 All bolts, washers, lock washers, and nuts will be corrosive resistant with zinc coating or hot dipped galvanized
- 3 Assemble the base in the following manner
 - a) Bolt the base to the concrete foundation, leveling bolts may be used if base is not true
 - b) Slip 4" aluminum mast over the base stub - 3" square tubing
 - c) Once the gate is positioned in the desired direction, secure the mast using the supplied 1/2" x 8" shear pin
- 4 The aluminum mast shall be 4" diameter, schedule 40
- 5 The base and all associated hardware shall be stainless steel or galvanized.
- 6 All painted surfaces shall be powder coated
- 7 Measurement for the 14' Barrier Gate shall be measured from the centerline of the mast to the tip of the gate
- 8 When fully raised, a nylon coated steel pull down cable will be secured to the outer gate arm using a bungee
- 9 A locking pin is provided to lock the gate in both the up and down positions. Lock is provided by purchaser.
- 10 Optional Equipment
 - a) Solar powered light kit with rechargeable battery. Kit consists of two (2) lights and each are automatically activated in the horizontal position and charge whenever in the vertical position



Safe-Crossings			
Title:			
14' Barrier Gate			
Drawn	Scale	Date	Dwg No.
JRD	None	2/8/14	B14-Gate
Appvl	Reference	rev 3/7/17	Page 1

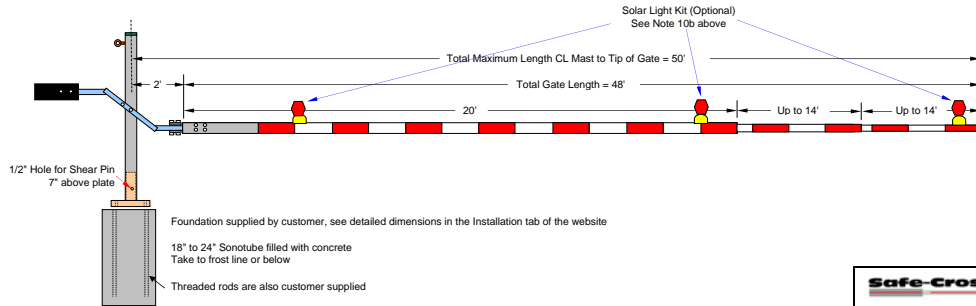
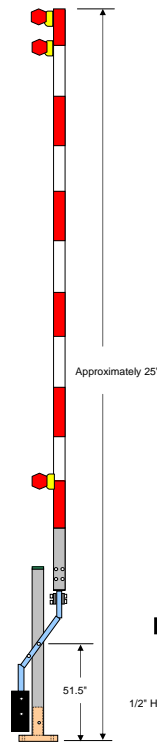
Safe-Crossings 50' Barrier Gate General Notes:

Design Criteria: Gate shall be 20' in the vertical position and any distance from 20' to 50' long in the horizontal position

See installation manual for detailed instructions

- 1 All barrier gate arms shall be grade 6061 - T6 Aluminum
- 2 All bolts, washers, lock washers, and nuts will be corrosive resistant with zinc coating or hot dipped galvanized
- 3 Assemble the base in the following manner
 - a) Bolt the base to the concrete foundation, leveling bolts may be used if base is not true
 - b) Slip 5" aluminum mast over the base stub - 4" square tubing
 - c) Once the gate is positioned in the desired direction, secure the mast using the supplied 1/2" x 8" shear pin
- 4 The aluminum mast shall be 5" diameter, schedule 40
- 5 The base and all associated hardware shall be stainless steel or galvanized.
- 6 All painted surfaces shall be powder coated
- 7 Measurement for the Barrier Gate shall be measured for exact length at each individual site. After installation of gate arm on mast, the middle and inner gate arms will be extended in equal increments to the desired length (anywhere between 20' and 50') and positioning holes will be field drilled for the locking pins.
- 8 When fully raised, a nylon coated steel pull down cable will be secured to the outer gate arm using a bungee
- 9 A locking pin is provided to lock the gate in both the up and down positions. Lock is provided by purchaser.
- 10 Optional Equipment
 - a) Solar powered light kit with rechargeable battery. Kit consists of three (3) lights and each are automatically activated in the horizontal position and charge in the vertical position

Note: A 35' version of the same gate is available, all remain the same less the last extendable gate.



Safe-Crossings			
Title:			
50' Barrier Gate			
Drawn	Scale	Date	Dwg No.
JRD	None	1/29/14	B50-Gate
App'1	Reference rev 3/7/17		Page 1